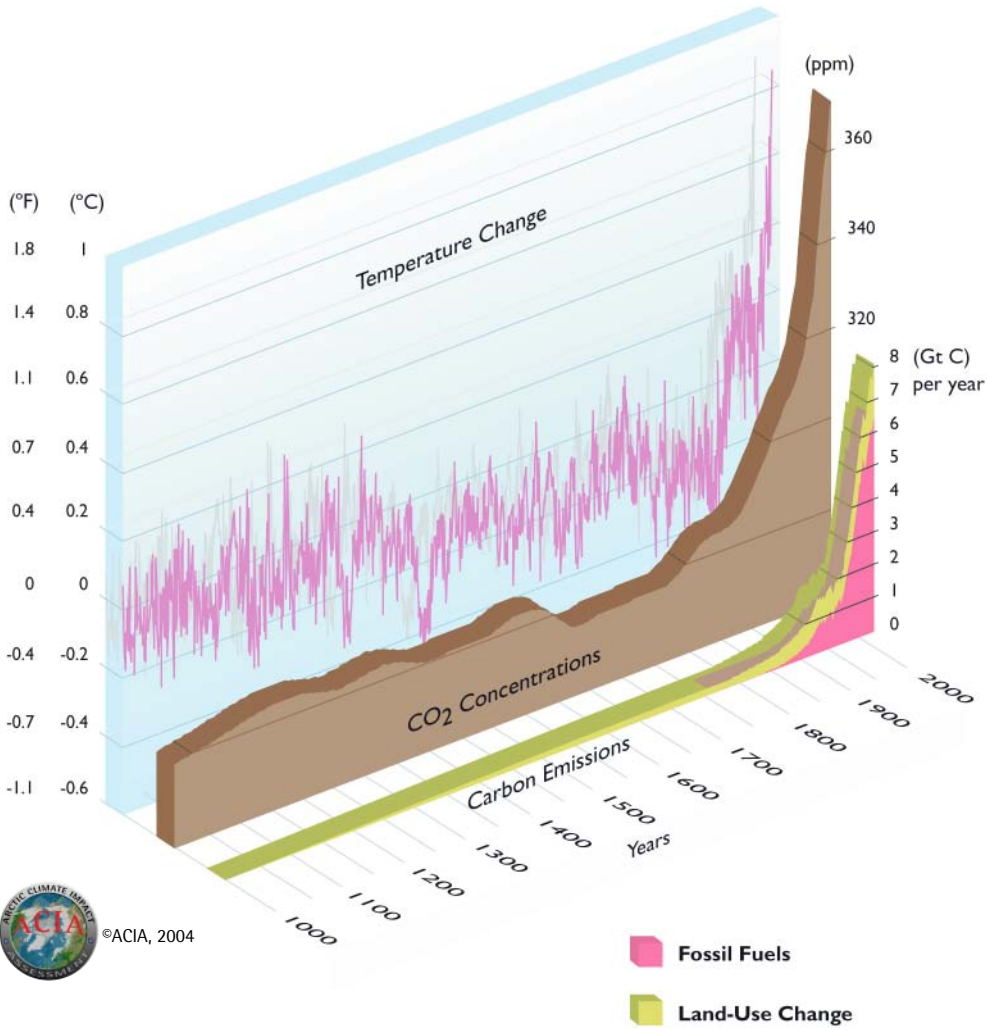
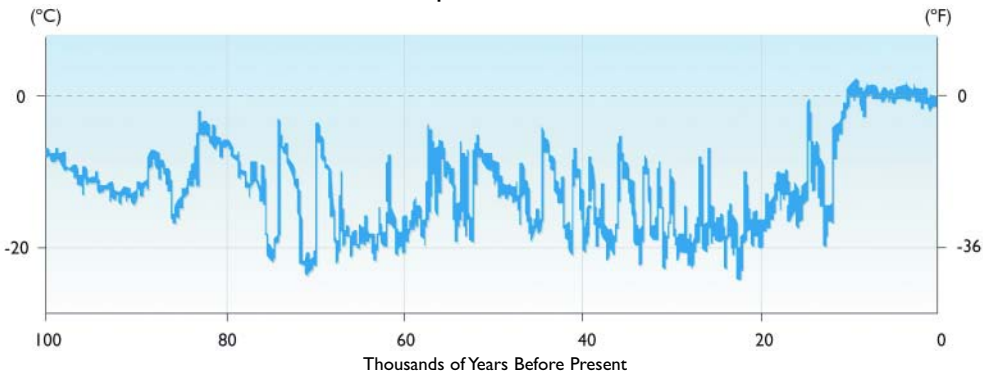


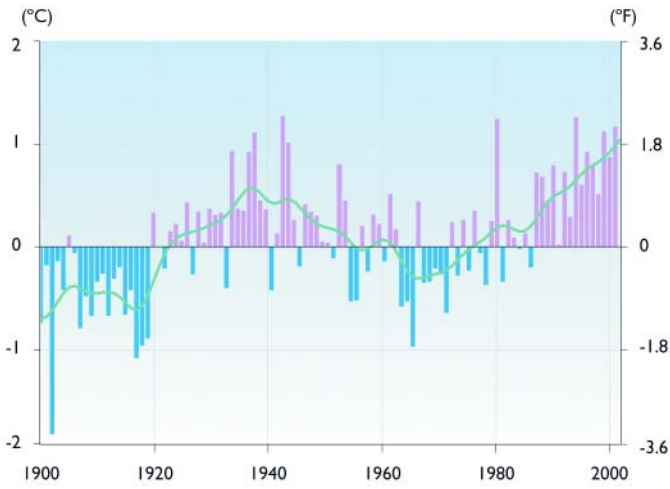
# 1000 Years of Changes in Carbon Emissions, CO<sub>2</sub> Concentrations and Temperature



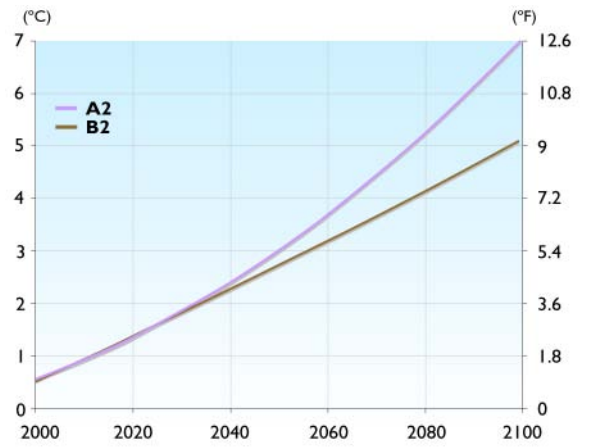
## 100 000 Years of Temperature Variation in Greenland



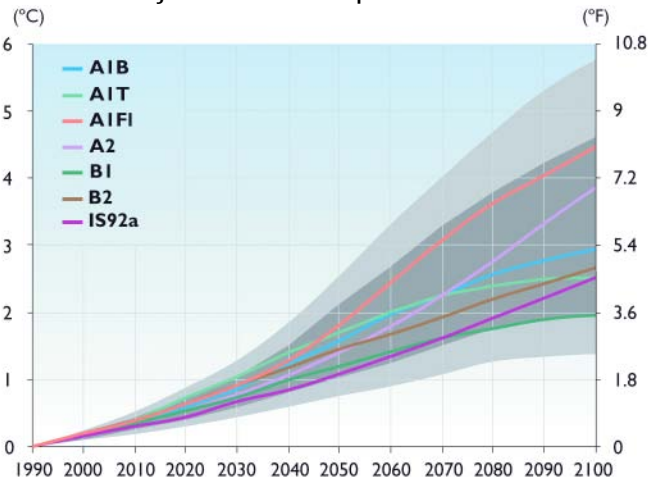
### Observed Arctic Temperature, 1900 to Present



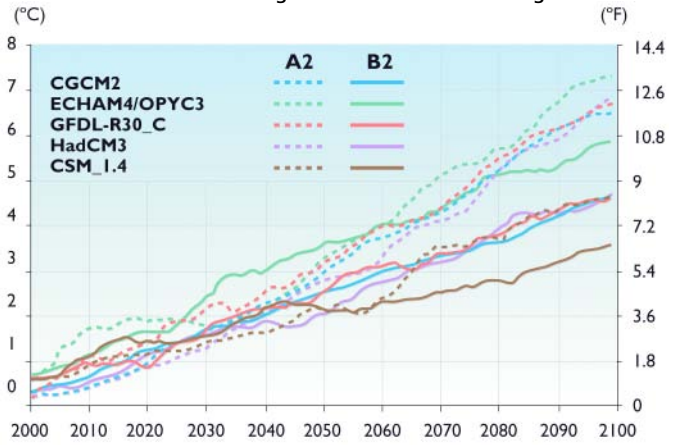
### Projected Arctic Temperature Rise



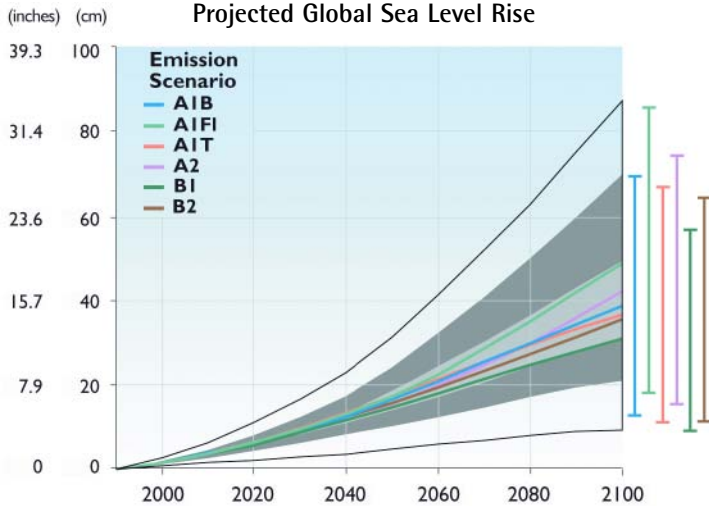
### Projected Global Temperature Rise



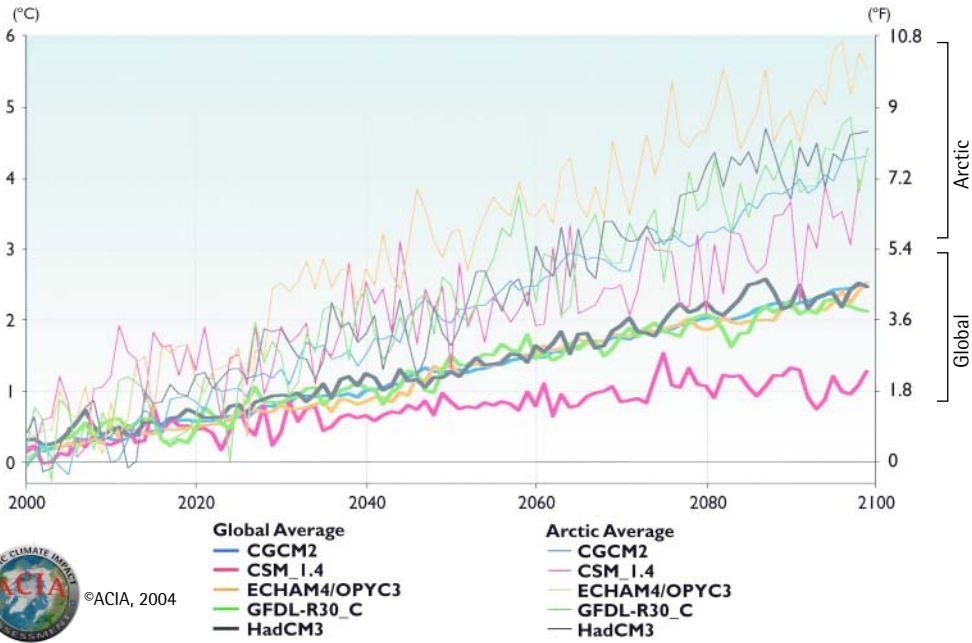
### Projected Arctic Surface Air Temperatures 2000–2100 60°N – Pole: Change from 1981–2000 average



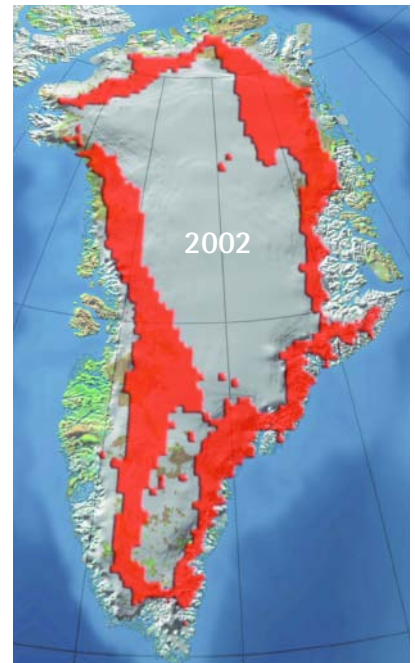
### Projected Global Sea Level Rise



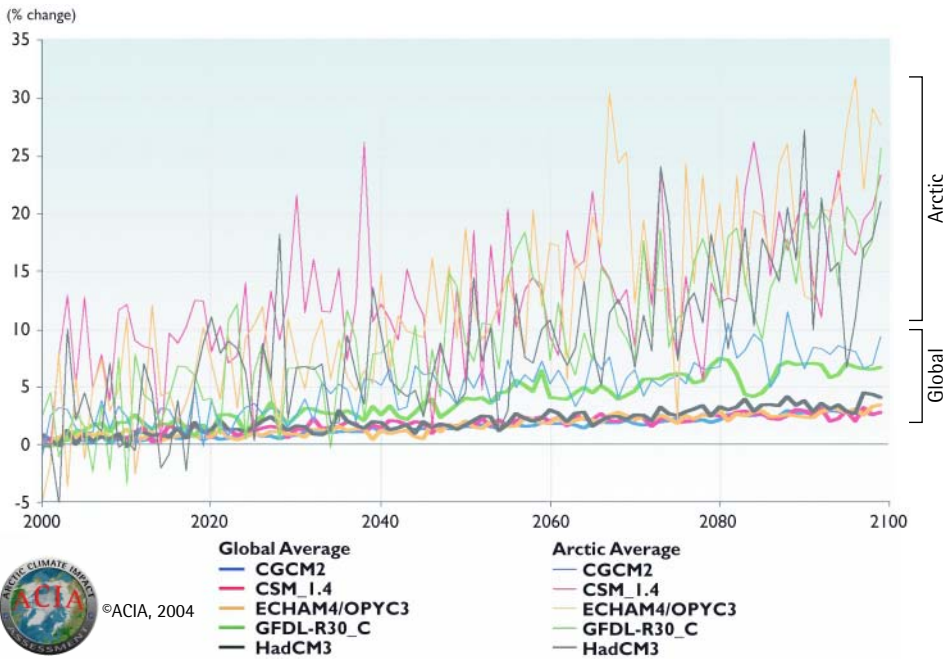
### Projected Surface Air Temperature Change (change from 1981-2000 Average)



### Greenland Ice Sheet Melt Extent

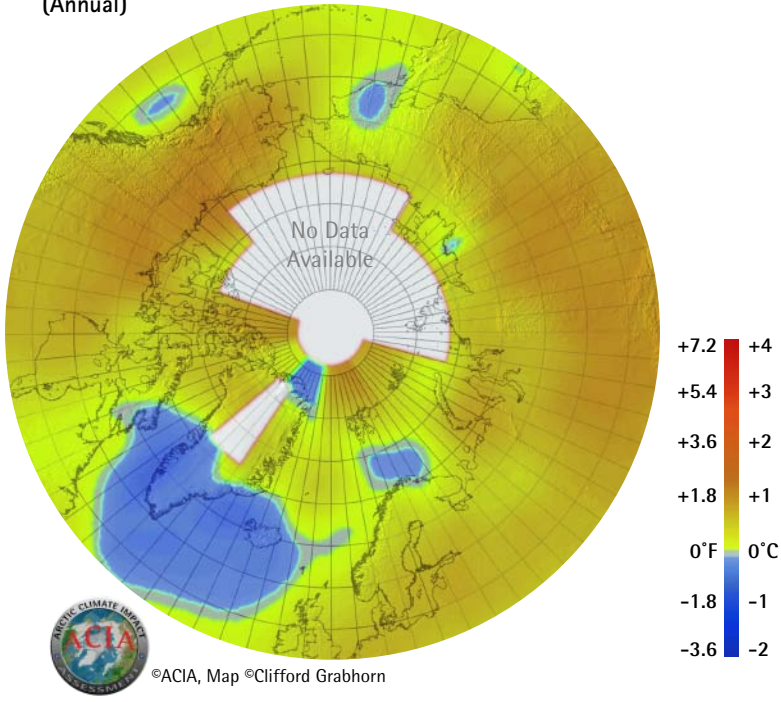


### Projected Precipitation Change (% change from 1981-2000 average)

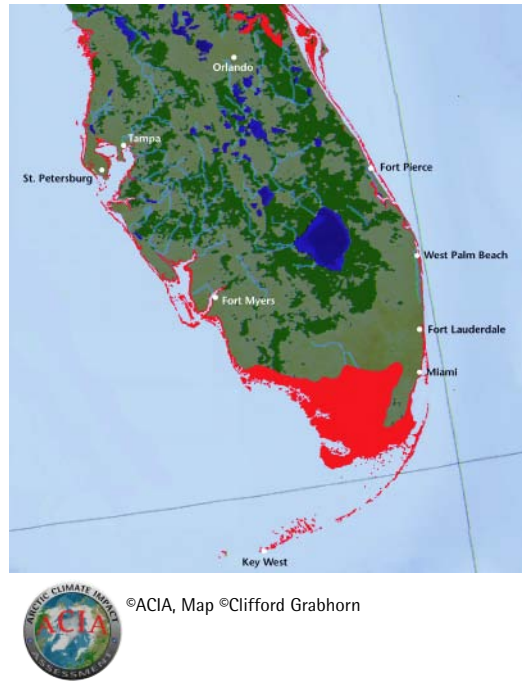


©ACIA, Map ©Clifford Grabhorn

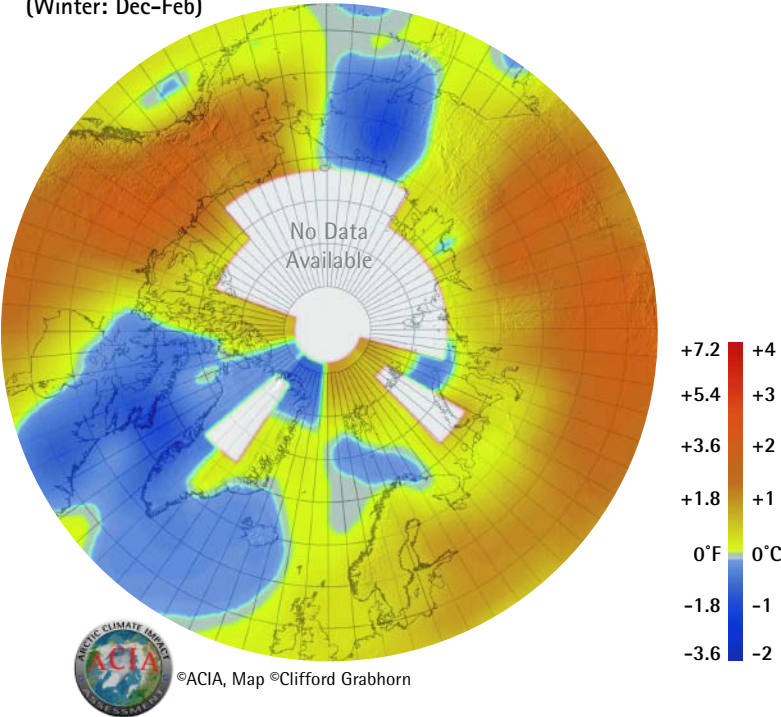
Observed Surface Air Temperature Changes: 1954 - 2003  
(Annual)



Areas in Florida Subject to Inundation  
with 100 Centimeter (3.3 ft) Sea Level Rise

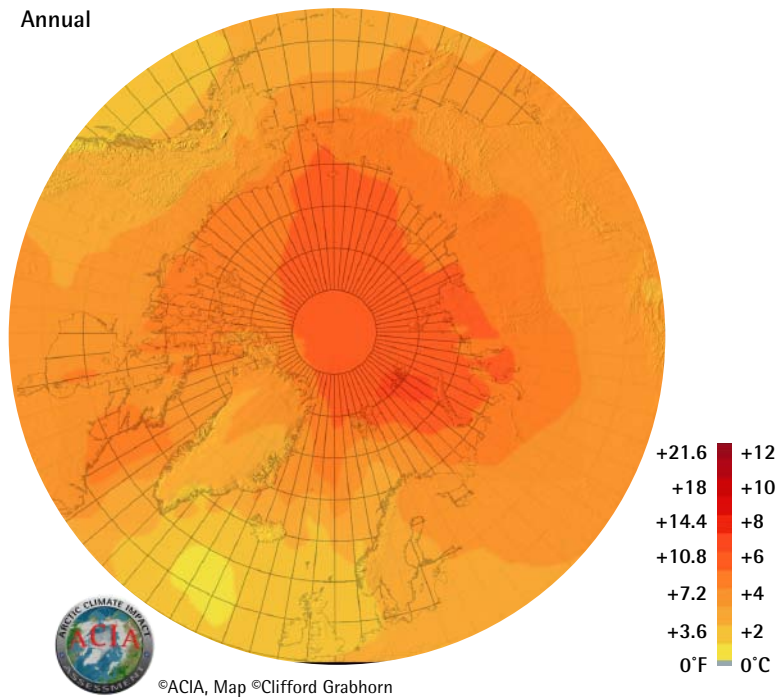


Observed Surface Air Temperature Changes: 1954 - 2003  
(Winter: Dec-Feb)



Projected Surface Air Temperature Change: 1990s - 2090s

Annual



Projected Ice Extent (5-model average for September)

2010 - 2030



2040 - 2060



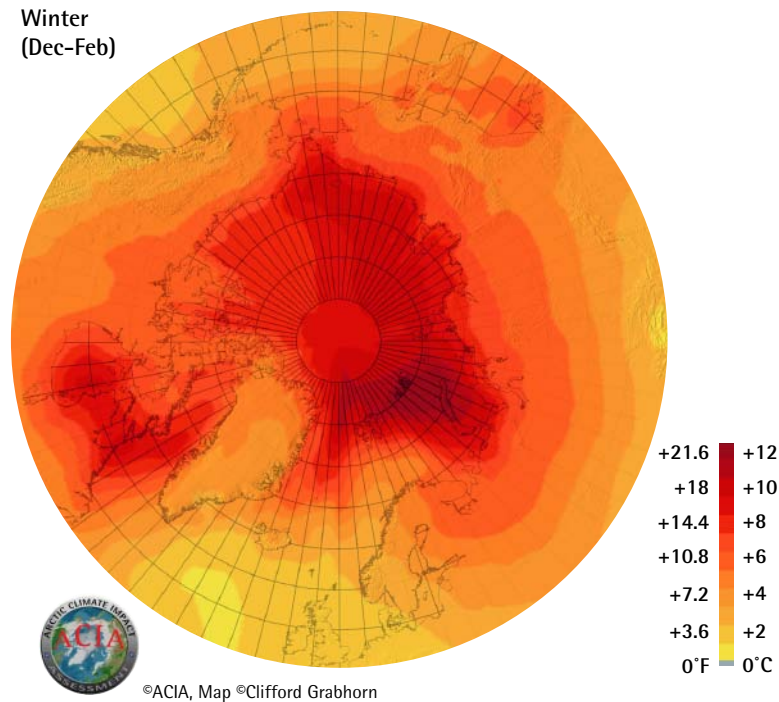
2070 - 2090



©ACIA, Map ©Clifford Grabhorn

Projected Surface Air Temperature Change: 1990s - 2090s

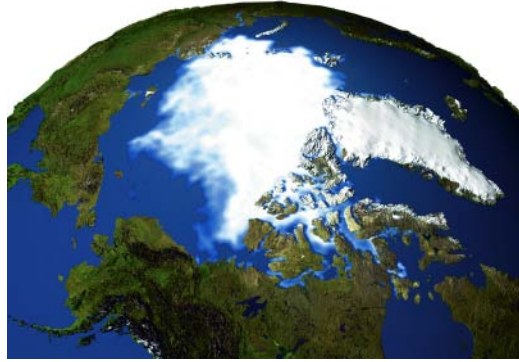
Winter (Dec-Feb)



Observed Sea Ice September 1979



Observed Sea Ice September 2003



### Global Ocean Circulation

